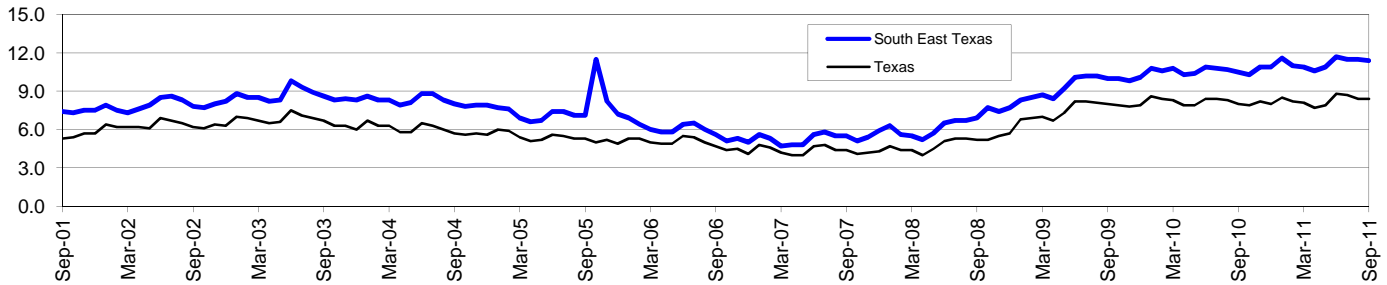


# South East Texas Workforce Development Area\*

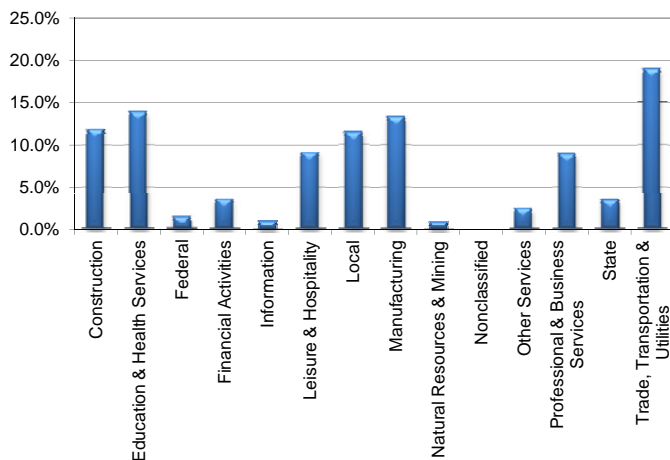
# September 2011

South East Texas WDA					Texas				
	CLF	Employed	Unemployed	Rate		CLF	Employed	Unemployed	Rate
Sep-11	190,588	168,868	21,720	11.4	Sep-11	12,371,895	11,330,273	1,041,622	8.4
Aug-11	189,784	167,864	21,920	11.5	Aug-11	12,316,888	11,276,289	1,040,599	8.4
Sep-10	187,628	167,978	19,650	10.5	Sep-10	12,183,356	11,205,967	977,389	8.0

### Historical Unemployment Rates



### South East Texas WDA Industry Composition 1st Quarter 2011



### Total WDA Claims

	Sep-11	Aug-11	Sep-10	OTY
Initial	1,809	2,538	2,165	-356
Continued	8,971	11,608	9,943	-972
Continued Claims for the Week of the 12th				
Continued	3,567	4,007	3,627	-60

### Texas Unemployment Insurance Claims Filed

	Sep-11	Aug-11	Sep-10	OTY
Initial	78,034	89,848	83,025	-4,991
Continued	747,606	885,556	859,823	-112,217
Continued Claims for the Week of the 12th				
Continued	183,571	190,177	207,868	-24,297

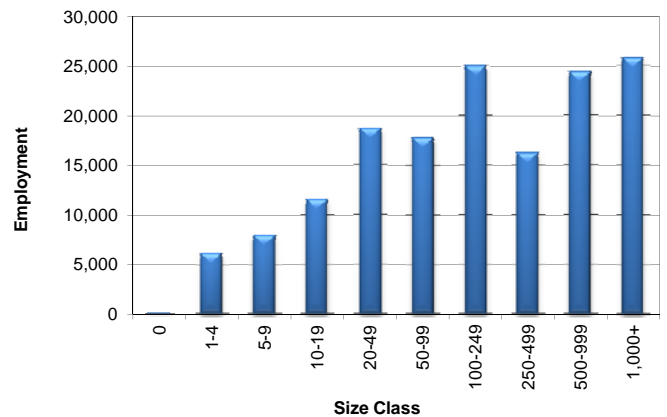
### South East Texas WDA Average Weekly Wage

	South East Tx	WDA Qtr. Chg.	Texas
1st Quarter 2011	\$890.13	-\$31.83	\$945.99
4th Quarter 2010	\$921.96	WDA OTY Chg.	\$976.16
1st Quarter 2010	\$819.02	\$71.11	\$891.80

### NAICS Covered Employment Quarterly Data 1st Quarter 2011

SUPER SECTOR	Employment	Change	
		Quarter	Year
Construction	18,177	-757	1,167
Education & Health Services	21,362	-374	-290
Federal	2,199	23	-32
Financial Activities	5,501	50	9
Information	1,416	-9	-89
Leisure & Hospitality	14,096	-132	-324
Local	17,506	-1,382	-1,421
Manufacturing	20,387	683	1,347
Natural Resources & Mining	1,255	-117	29
Nonclassified	21	-10	-3
Other Services	3,821	-21	-97
Professional & Business Services	13,671	104	1,097
State	5,318	4	4
Trade, Transportation & Utilities	28,918	-811	-226
<b>TOTAL</b>	<b>153,648</b>	<b>-2,749</b>	<b>1,171</b>

### Size Class Employment Composition 1st Quarter 2011



\*Counties in WDA: Hardin, Jefferson, & Orange