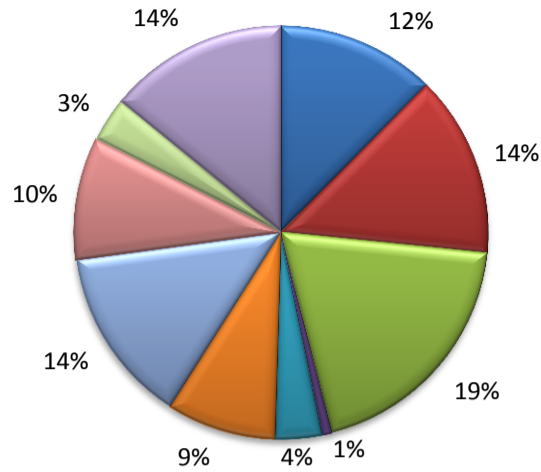


(Hardin, Jefferson, Orange)

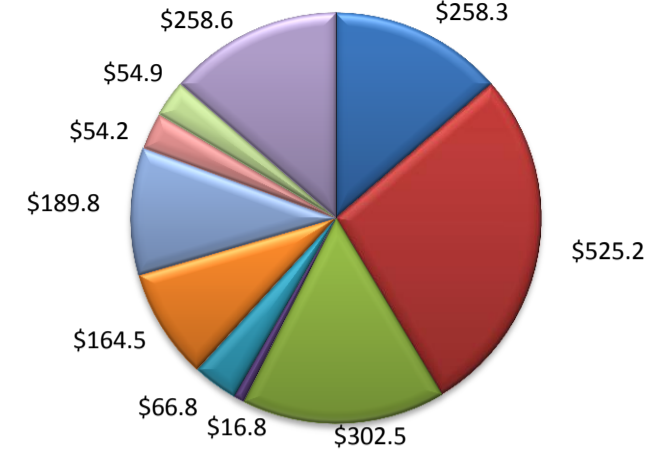
Industry Composition



- Mining, Logging, and Construction
- Manufacturing
- Trade, Transportation, and Utilities
- Information
- Financial Activities
- Professional and Business Services
- Education and Health Services
- Leisure and Hospitality
- Other Services
- Government

Wages by Industry (in millions)

1st Quarter 2013



Employment by Industry

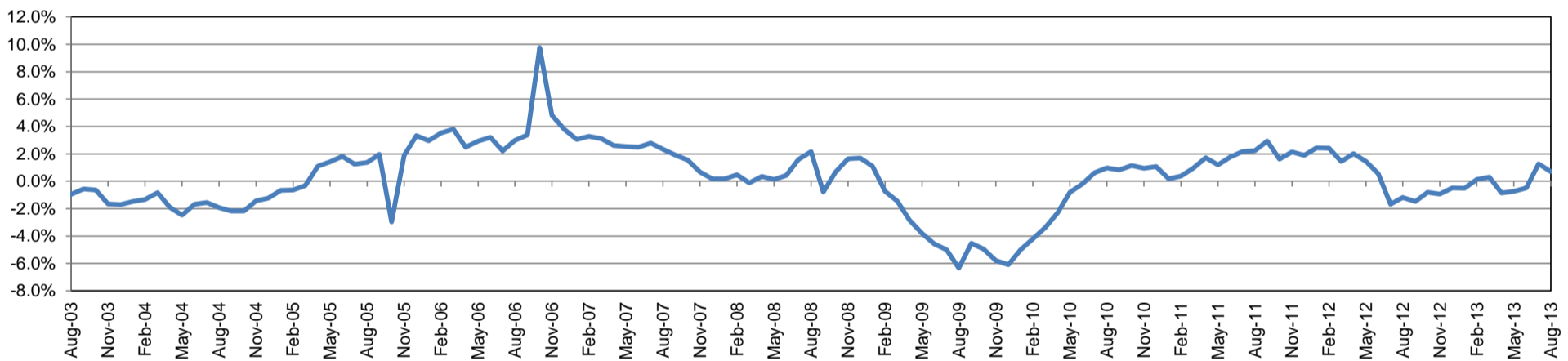
| | Aug-13 | Jul-13 | Aug-12 | Monthly Change | | Annual Change | |
|--------------------------------------|---------|---------|---------|----------------|-------|---------------|-------|
| | | | | Actual | % | Actual | % |
| Total Nonfarm | 159,700 | 160,000 | 158,600 | -300 | -0.2% | 1,100 | 0.7% |
| Mining, Logging, and Construction | 19,800 | 19,700 | 19,600 | 100 | 0.5% | 200 | 1.0% |
| Manufacturing | 22,700 | 22,600 | 22,300 | 100 | 0.4% | 400 | 1.8% |
| Trade, Transportation, and Utilities | 31,000 | 31,100 | 30,300 | -100 | -0.3% | 700 | 2.3% |
| Information | 1,300 | 1,300 | 1,400 | 0 | 0.0% | -100 | -7.1% |
| Financial Activities | 5,800 | 5,800 | 5,700 | 0 | 0.0% | 100 | 1.8% |
| Professional and Business Services | 13,700 | 13,800 | 13,800 | -100 | -0.7% | -100 | -0.7% |
| Education and Health Services | 22,100 | 22,000 | 22,300 | 100 | 0.5% | -200 | -0.9% |
| Leisure and Hospitality | 15,200 | 15,100 | 14,600 | 100 | 0.7% | 600 | 4.1% |
| Other Services | 5,600 | 5,600 | 5,500 | 0 | 0.0% | 100 | 1.8% |
| Government | 22,500 | 23,000 | 23,100 | -500 | -2.2% | -600 | -2.6% |

Industry Size Class

March 2013

| Size Class | Employees per firm | Number of Firms | Employment in Size Class | % Total Employment |
|------------|--------------------|-----------------|--------------------------|--------------------|
| 9 | 1000+ | 14 | 23,422 | 15.1% |
| 8 | 500-999 | 32 | 23,371 | 15.1% |
| 7 | 250-499 | 50 | 18,447 | 11.9% |
| 6 | 100-249 | 175 | 26,453 | 17.1% |
| 5 | 50-99 | 272 | 18,766 | 12.1% |
| 4 | 20-49 | 616 | 19,062 | 12.3% |
| 3 | 10-19 | 823 | 11,139 | 7.2% |
| 2 | 5-9 | 1,192 | 7,819 | 5.1% |
| 1 | 1-4 | 2,910 | 6,194 | 4.0% |
| 0 | 0 | 468 | 0 | 0.0% |
| Total | | 6,552 | 154,673 | 100.0% |

Annual Growth Rate for Total Nonagricultural Employment



Unemployment Information (all estimates in thousands)

| | Beaumont - Port Arthur MSA | | | | Texas (Actual) | | | | United States (Actual) | | | |
|--------|----------------------------|-------|--------|------|----------------|----------|--------|------|------------------------|-----------|----------|------|
| | C.L.F. | Emp. | Unemp. | Rate | C.L.F. | Emp. | Unemp. | Rate | C.L.F. | Emp. | Unemp. | Rate |
| Aug-13 | 187.8 | 169.4 | 18.4 | 9.8 | 12,780.8 | 11,981.9 | 798.9 | 6.3 | 155,971.0 | 144,509.0 | 11,462.0 | 7.3 |
| Jul-13 | 189.2 | 170.0 | 19.2 | 10.1 | 12,868.2 | 12,010.8 | 857.4 | 6.7 | 157,196.0 | 145,113.0 | 12,083.0 | 7.7 |
| Aug-12 | 187.8 | 167.9 | 19.9 | 10.6 | 12,572.9 | 11,700.4 | 872.5 | 6.9 | 155,255.0 | 142,558.0 | 12,696.0 | 8.2 |

Historical Unemployment Rates

