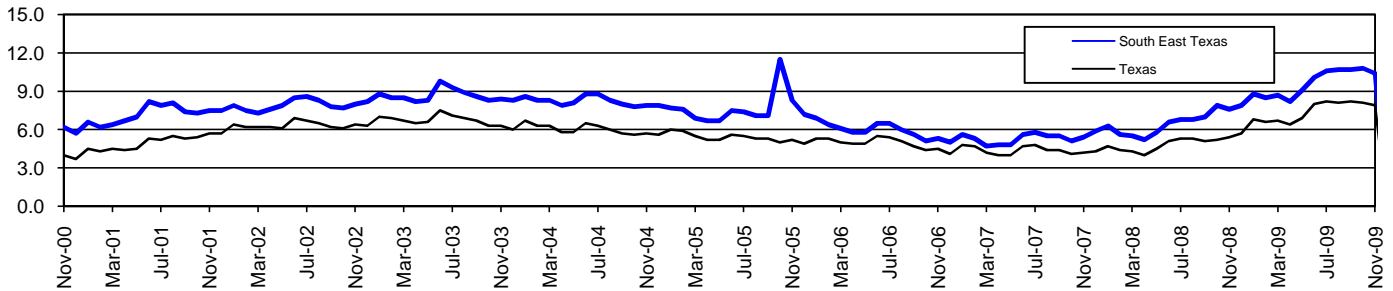


South East Texas Workforce Development Area*

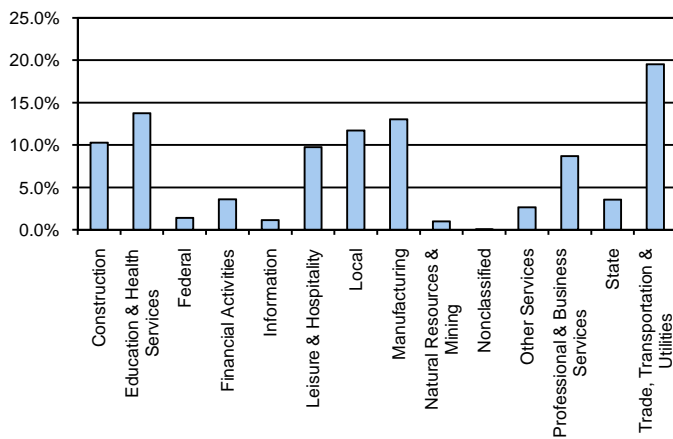
November 2009

South East Texas WDA					Texas				
	CLF	Employed	Unemployed	Rate		CLF	Employed	Unemployed	Rate
Nov-09	183,350	164,273	19,077	10.4	Nov-09	12,103,220	11,149,340	953,880	7.9
Oct-09	183,376	163,609	19,767	10.8	Oct-09	12,069,719	11,090,397	979,322	8.1
Nov-08	181,561	167,735	13,826	7.6	Nov-08	11,808,224	11,167,592	640,632	5.4

Historical Unemployment Rates



South East Texas WDA Industry Composition 2nd Quarter 2009



Total WDA Claims

	Nov-09	Oct-09	Nov-08	OTY
Initial	2,212	2,460	1,704	508
Continued	14,077	12,752	13,408	669
Continued Claims for the Week of the 12th				
Continued	4,372	4,468	3,680	692

Texas Unemployment Insurance Claims Filed

	Nov-09	Oct-09	Nov-08	OTY
Initial	98,119	107,555	89,769	8,350
Continued	1,219,676	1,085,906	633,949	585,727
Continued Claims for the Week of the 12th				
Continued	259,781	258,201	155,335	104,446

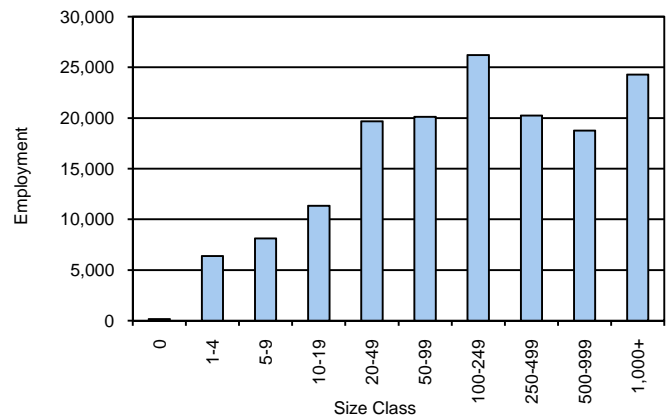
South East Texas WDA Average Weekly Wage

	South East Tx	WDA Qtr. Chg.	Texas
2nd Quarter 2009	\$794.18	-\$39.22	\$838.34
1st Quarter 2009	\$833.40	WDA OTY Chg.	\$885.88
2nd Quarter 2008	\$794.78	-\$0.60	\$848.95

NAICS Covered Employment Quarterly Data 2nd Quarter 2009

SUPER SECTOR	Employment	Change	
		Quarter	Year
Construction	15,971	-2,643	-1,320
Education & Health Services	21,349	249	108
Federal	2,156	62	0
Financial Activities	5,584	-7	-104
Information	1,746	-57	-254
Leisure & Hospitality	15,131	536	400
Local	18,205	322	637
Manufacturing	20,218	-1,072	-2,638
Natural Resources & Mining	1,517	-106	-226
Nonclassified	56	11	2
Other Services	4,118	59	-185
Professional & Business Services	13,478	-829	-2,035
State	5,485	34	163
Trade, Transportation & Utilities	30,344	-297	-359
TOTAL	155,358	-3,738	-5,811

Size Class Employment Composition 2nd Quarter 2009



*Counties in WDA: Hardin, Jefferson, & Orange