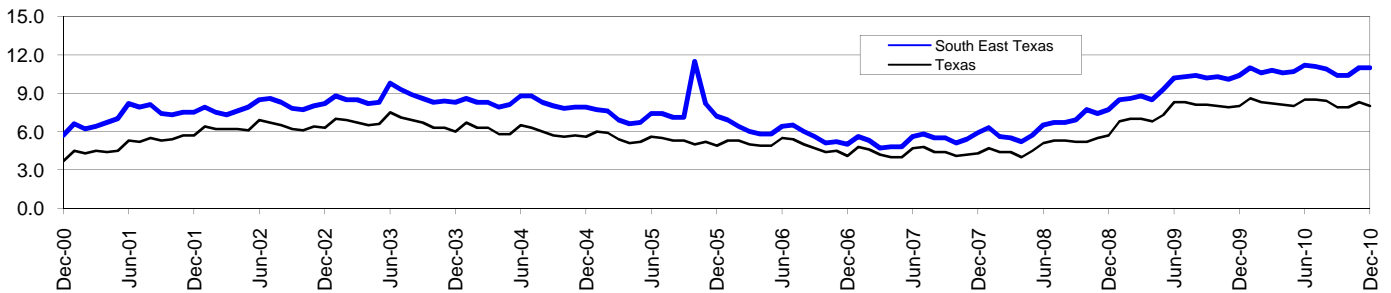


South East Texas Workforce Development Area*

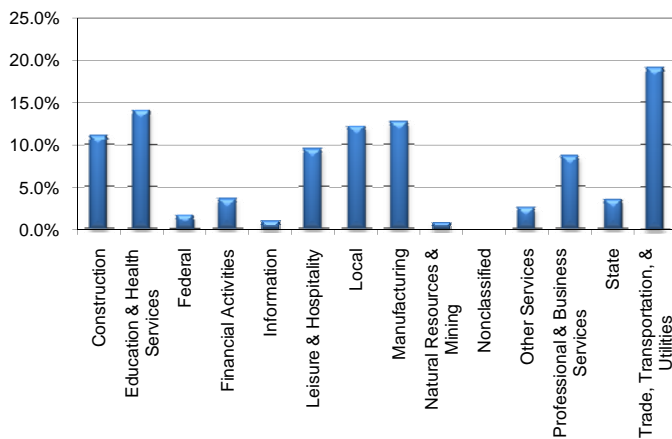
December 2010

South East Texas WDA					Texas				
	CLF	Employed	Unemployed	Rate		CLF	Employed	Unemployed	Rate
Dec-10	189,377	168,512	20,865	11.0	Dec-10	12,201,405	11,223,782	977,623	8.0
Nov-10	189,240	168,416	20,824	11.0	Nov-10	12,226,458	11,214,393	1,012,065	8.3
Dec-09	184,279	165,174	19,105	10.4	Dec-09	12,027,653	11,069,879	957,774	8.0

Historical Unemployment Rates



South East Texas WDA Industry Composition 2nd Quarter 2010



Total WDA Claims

	Dec-10	Nov-10	Dec-09	OTY
Initial	2,437	2,728	2,226	211
Continued	11,744	11,105	14,370	-2,626
Continued Claims for the Week of the 12th				
Continued	563	546	928	-365

Texas Unemployment Insurance Claims Filed

	Dec-10	Nov-10	Dec-09	OTY
Initial	85,610	85,666	100,826	-15,216
Continued	880,919	887,513	1,147,179	-266,260
Continued Claims for the Week of the 12th				
Continued	208,598	190,017	252,344	-43,746

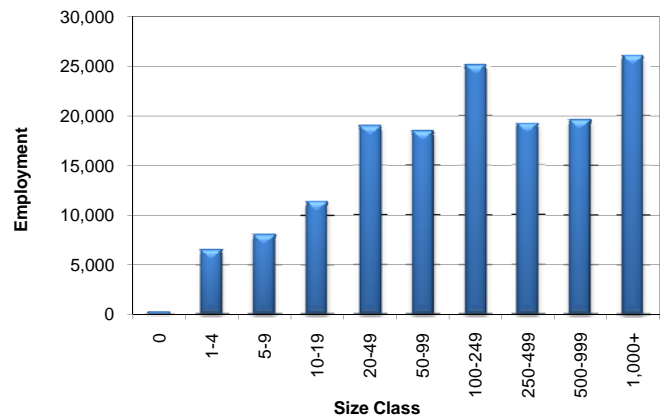
South East Texas WDA Average Weekly Wage

	South East Tx	WDA Qtr. Chg.	Texas
2nd Quarter 2010	\$807.44	-\$11.92	\$863.94
1st Quarter 2010	\$819.36	WDA OTY Chg.	\$891.60
2nd Quarter 2009	\$797.14	\$10.30	\$838.52

NAICS Covered Employment Quarterly Data 2nd Quarter 2010

SUPER SECTOR	Employment	Change	
		Quarter	Year
Construction	16,917	-93	1,009
Education & Health Services	21,684	271	319
Federal	2,618	384	464
Financial Activities	5,453	-39	-142
Information	1,463	-42	-282
Leisure & Hospitality	14,509	82	-587
Local	18,766	-161	810
Manufacturing	19,483	451	-748
Natural Resources & Mining	1,248	22	-267
Nonclassified	31	7	-10
Other Services	3,886	-32	-243
Professional & Business Services	13,091	517	-397
State	5,320	6	-163
Trade, Transportation, & Utilities	29,232	71	-1,116
TOTAL	153,701	1,444	-1,353

Size Class Employment Composition 2nd Quarter 2010



*Counties in WDA: Hardin, Jefferson, & Orange