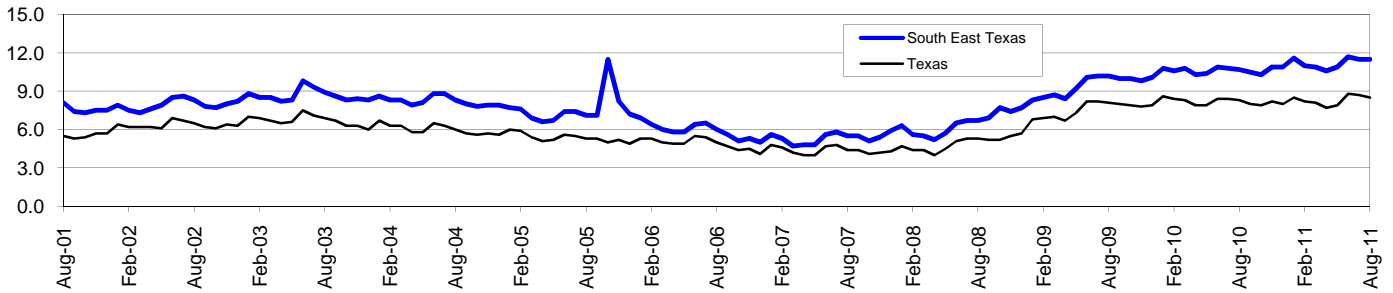


# South East Texas Workforce Development Area\*

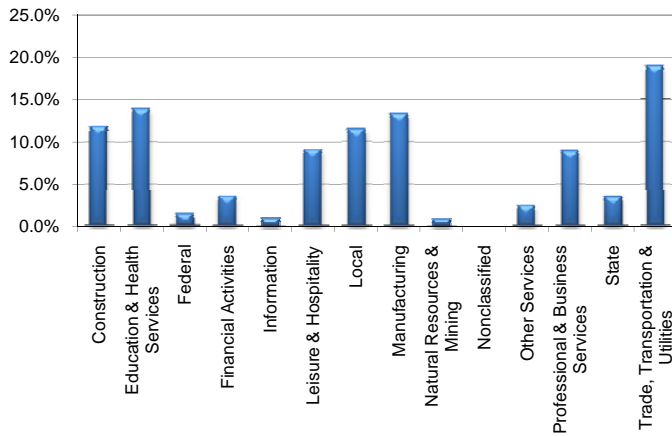
## August 2011

South East Texas WDA					Texas				
	CLF	Employed	Unemployed	Rate		CLF	Employed	Unemployed	Rate
<b>Aug-11</b>	191,100	169,168	21,932	11.5	<b>Aug-11</b>	12,317,192	11,276,205	1,040,987	8.5
<b>Jul-11</b>	192,196	170,044	22,152	11.5	<b>Jul-11</b>	12,317,791	11,241,317	1,076,474	8.7
<b>Aug-10</b>	188,485	168,387	20,098	10.7	<b>Aug-10</b>	12,167,029	11,156,500	1,010,529	8.3

### Historical Unemployment Rates



### South East Texas WDA Industry Composition 1st Quarter 2011



### Total WDA Claims

	Aug-11	Jul-11	Aug-10	OTY
<b>Initial</b>	2,538	2,216	2,495	<b>43</b>
<b>Continued</b>	11,608	9,908	11,838	<b>-230</b>
<b>Continued Claims for the Week of the 12th</b>				
<b>Continued</b>	484	583	625	<b>-141</b>

### Texas Unemployment Insurance Claims Filed

	Aug-11	Jul-11	Aug-10	OTY
<b>Initial</b>	89,848	90,111	91,613	<b>-1,765</b>
<b>Continued</b>	885,556	865,252	1,064,768	<b>-179,212</b>
<b>Continued Claims for the Week of the 12th</b>				
<b>Continued</b>	190,177	191,994	216,017	<b>-25,840</b>

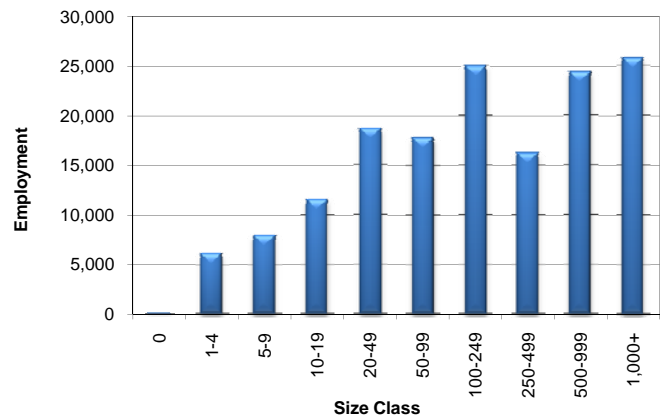
### South East Texas WDA Average Weekly Wage

	South East Tx	WDA Qtr. Chg.	Texas
<b>1st Quarter 2011</b>	\$890.13	-\$31.83	\$945.99
<b>4th Quarter 2010</b>	\$921.96	<b>WDA OTY Chg.</b>	\$976.16
<b>1st Quarter 2010</b>	\$819.02	\$71.11	\$891.80

### NAICS Covered Employment Quarterly Data 1st Quarter 2011

SUPER SECTOR	Employment	Change	
		Quarter	Year
Construction	18,177	-757	1,167
Education & Health Services	21,362	-374	-290
Federal	2,199	23	-32
Financial Activities	5,501	50	9
Information	1,416	-9	-89
Leisure & Hospitality	14,096	-132	-324
Local	17,506	-1,382	-1,421
Manufacturing	20,387	683	1,347
Natural Resources & Mining	1,255	-117	29
Nonclassified	21	-10	-3
Other Services	3,821	-21	-97
Professional & Business Services	13,671	104	1,097
State	5,318	4	4
Trade, Transportation & Utilities	28,918	-811	-226
<b>TOTAL</b>	<b>153,648</b>	<b>-2,749</b>	<b>1,171</b>

### Size Class Employment Composition 1st Quarter 2011



\*Counties in WDA: Hardin, Jefferson, & Orange

Available at <http://www.tracer2.com/>