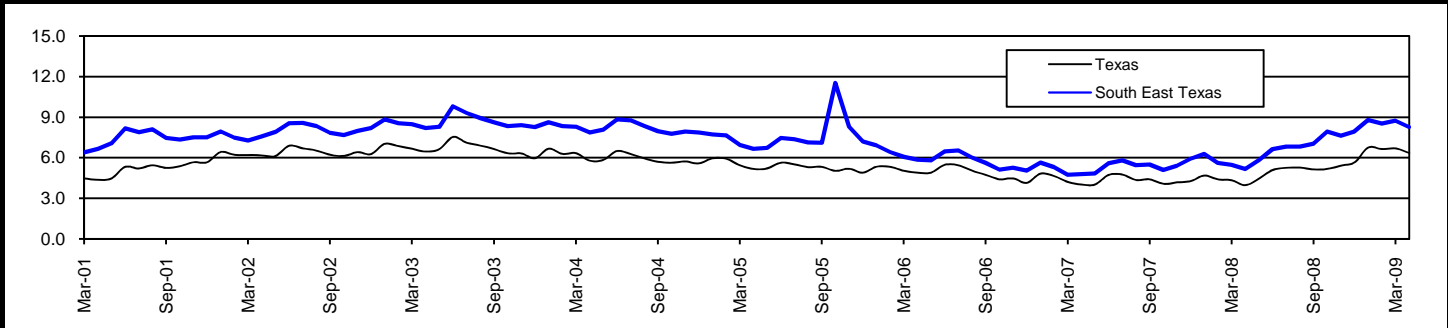


South East Texas Workforce Development Area

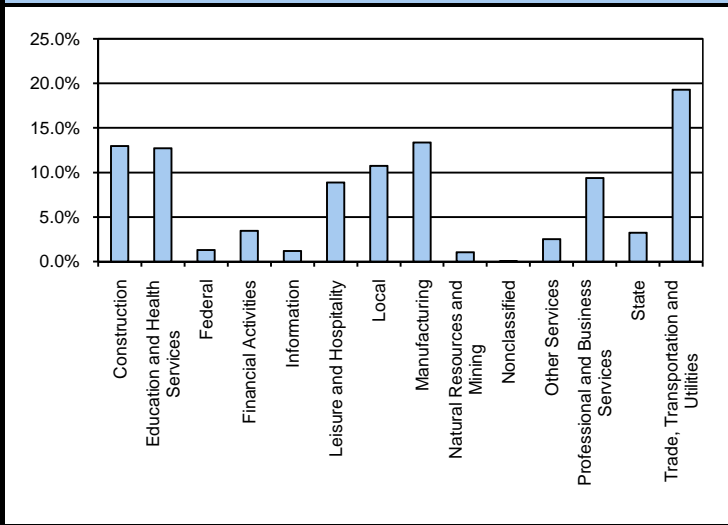
April 2009

South East Texas WDA					Texas				
	CLF	Employed	Unemployed	Rate		CLF	Employed	Unemployed	Rate
Apr-09	181,491	166,506	14,985	8.3	Apr-09	11,873,732	11,118,855	754,877	6.4
Mar-09	181,705	165,842	15,863	8.7	Mar-09	11,819,643	11,027,852	791,791	6.7
Apr-08	179,040	169,800	9,240	5.2	Apr-08	11,608,323	11,146,019	462,304	4.0

Historical Unemployment Rates



South East Texas WDA Industry Composition 4th Quarter 2008



Total WDA Claims

	Apr-09	Mar-09	Apr-08	OTY
Initial	2,873	2,724	1,834	1,039
Continued	13,934	15,465	8,170	5,764
Continued Claims for the Week of the 12th				
Continued	4,668	4,489	2,013	2,655

Total State of Texas Claims

	Apr-09	Mar-09	Apr-08	OTY
Initial	24,649	25,623	13,387	11,262
Continued	284,225	269,495	105,437	178,788
Continued Claims for the Week of the 12th				
Continued	280,385	251,071	104,120	176,265

South East Texas WDA Average Weekly Wage

	South East TX	Qtr Change	Texas
4th Quarter 2008	\$908.93	111.87	\$934.10
3rd Quarter 2008	\$797.06	OTY Change	\$848.97
4th Quarter 2007	\$838.10	70.83	\$911.41

NAICS Covered Employment Quarterly Data 4th Quarter 2008

SUPER SECTOR	Total	Change	
		Quarter	Year
Construction	21,184	2,421	5,172
Education and Health Services	20,765	-235	-64
Federal	2,106	-27	-327
Financial Activities	5,636	-55	-338
Information	1,909	-51	-175
Leisure and Hospitality	14,467	-97	230
Local	17,550	1,453	-269
Manufacturing	21,815	-1,159	-1,333
Natural Resources and Mining	1,702	-5	33
Nonclassified	33	-6	-14
Other Services	4,107	-20	-241
Professional and Business Services	15,274	-243	88
State	5,270	266	250
Trade, Transportation and Utilities	31,509	714	-92
TOTAL	163,327	2,956	2,920

Size Class Employment Composition 4th Quarter 2008

