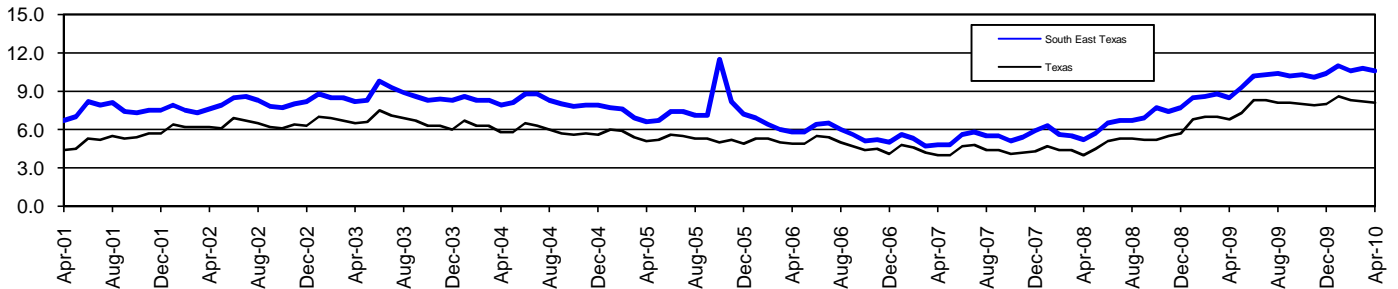


South East Texas Workforce Development Area*

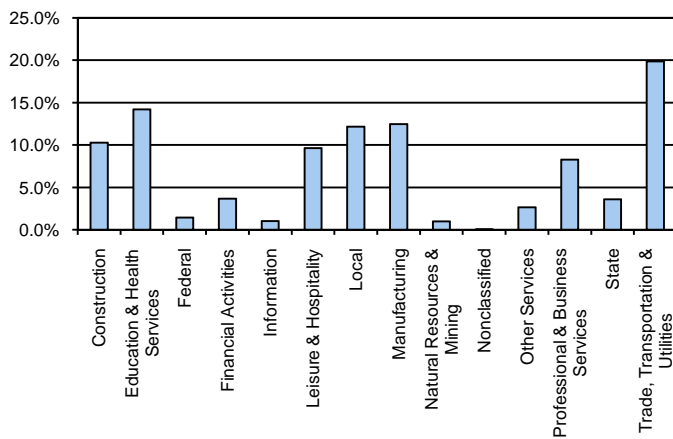
April 2010

South East Texas WDA					Texas				
	CLF	Employed	Unemployed	Rate		CLF	Employed	Unemployed	Rate
Apr-10	187,809	167,929	19,880	10.6	Apr-10	12,210,860	11,221,229	989,631	8.1
Mar-10	186,693	166,574	20,119	10.8	Mar-10	12,122,374	11,127,647	994,727	8.2
Apr-09	183,140	167,572	15,568	8.5	Apr-09	11,832,504	11,031,509	800,995	6.8

Historical Unemployment Rates



South East Texas WDA Industry Composition 4th Quarter 2009



Total WDA Claims

	Apr-10	Mar-10	Apr-09	OTY
Initial	2,402	2,696	2,873	-471
Continued	10,642	13,173	13,934	-3,292
Continued Claims for the Week of the 12th				
Continued	766	869	1,199	-433

Texas Unemployment Insurance Claims Filed

	Apr-10	Mar-10	Apr-09	OTY
Initial	96,295	98,362	118,036	-21,741
Continued	954,091	1,088,926	1,186,522	-232,431
Continued Claims for the Week of the 12th				
Continued	233,963	233,413	284,225	-50,262

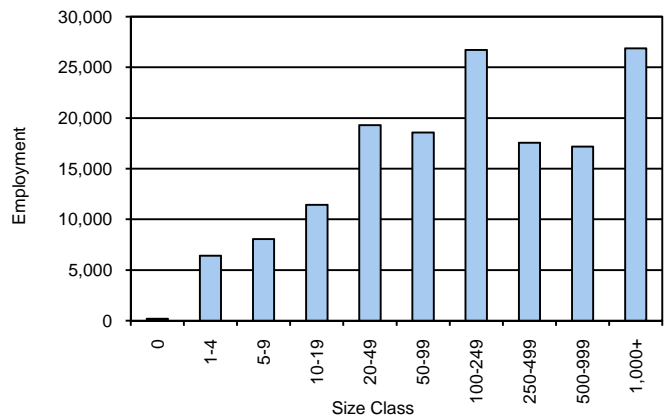
South East Texas WDA Average Weekly Wage

	South East Tx	WDA Qtr. Chg.	Texas
4th Quarter 2009	\$887.46	\$76.67	\$943.97
3rd Quarter 2009	\$810.79	WDA OTY Chg.	\$844.86
4th Quarter 2008	\$908.35	-\$20.89	\$932.81

NAICS Covered Employment Quarterly Data 4th Quarter 2009

SUPER SECTOR	Employment	Change	
		Quarter	Year
Construction	15,602	-175	-5,391
Education & Health Services	21,626	133	840
Federal	2,157	66	51
Financial Activities	5,539	10	-110
Information	1,547	-151	-371
Leisure & Hospitality	14,640	-141	181
Local	18,517	1,581	967
Manufacturing	18,937	-512	-2,892
Natural Resources & Mining	1,453	-23	-266
Nonclassified	32	4	21
Other Services	3,974	-34	-140
Professional & Business Services	12,602	-58	-2,619
State	5,417	162	7
Trade, Transportation & Utilities	30,217	5	-1,136
TOTAL	152,260	867	-10,858

Size Class Employment Composition 4th Quarter 2009



*Counties in WDA: Hardin, Jefferson, & Orange