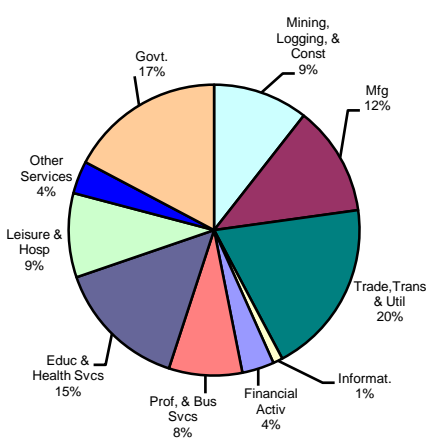
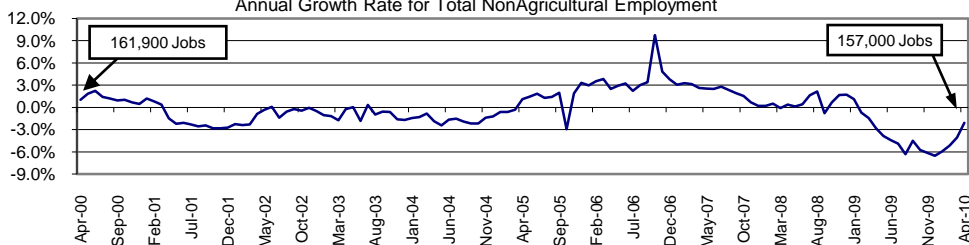


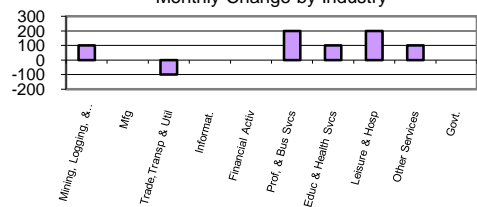
Industry Composition



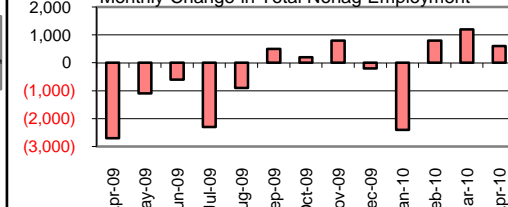
Annual Growth Rate for Total NonAgricultural Employment



Monthly Change by Industry



Monthly Change in Total Nonag Employment



Employment by Industry

Industry	Employment			Monthly Change		Annual Change	
	Apr-2010	Mar-2010	Apr-2009	Actual	%	Actual	%
Total Nonagricultural	157,000	156,400	160,400	600	0.4%	-3,400	-2.1%
Mining, Logging, & Const	16,600	16,500	17,600	100	0.6%	-1,000	-5.7%
Manufacturing	19,200	19,200	20,700	0	0.0%	-1,500	-7.3%
Trade, Transp., & Utilities	30,500	30,600	30,800	-100	-0.3%	-300	-1.0%
Information	1,700	1,700	1,800	0	0.0%	-100	-5.6%
Financial Activities	5,600	5,600	5,700	0	0.0%	-100	-1.8%
Profes., & Business Svcs	12,800	12,600	14,000	200	1.6%	-1,200	-8.6%
Education & Health Svcs	23,100	23,000	22,500	100	0.4%	600	2.7%
Leisure & Hospitality	14,700	14,500	15,000	200	1.4%	-300	-2.0%
Other Services	5,700	5,600	5,700	100	1.8%	0	0.0%
Government	27,100	27,100	26,600	0	0.0%	500	1.9%

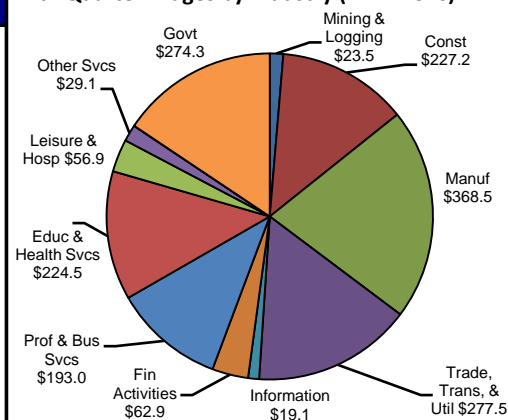
Size Class of Industries as of December 2009

Size Class	Employees Per Firm	Number of Firms	Employment in Size Class	% of Total Employment
9	1000+	16	26937	17.7%
8	500-999	24	17149	11.3%
7	250-499	51	17667	11.6%
6	100-249	175	26725	17.5%
5	50-99	271	18664	12.2%
4	20-49	634	19363	12.7%
3	10-19	846	11497	7.5%
2	5-9	1223	8060	5.3%
1	1-4	3019	6335	4.2%
0	0	444	0	0.0%
TOTAL		6703	152397	100.0%

Comments for April 2010

Total Nonagricultural Employment in the Beaumont-Port Arthur MSA gained 600 jobs in April. Since January, the MSA gained 2,600 jobs or 1.7 percent. Since April 2009, the MSA lost 3,400 jobs, an annual growth rate of -2.1 percent. The employment gain was primarily attributed to Professional and Business Services and Leisure and Hospitality, with increases of 200 jobs each. Since January, Professional and Business Services gained 300 jobs or 2.4 percent. The annual growth rate for Professional and Business Services was -8.6 percent. Leisure and Hospitality had an over-the-month gain for the third consecutive month. Since January, the industry gained 500 jobs or 3.5 percent. Mining, Logging, and Construction, Education and Health Services and Other Services had increases of 100 jobs each. Transportation, Warehousing, and Utilities had the only over-the-month decrease with a loss of 100 jobs. Since April 2009, the industry lost 200 jobs or -3.7 percent.

4th Quarter Wages by Industry (in millions)



Unemployment Information (all estimates are in thousands)

	Beaumont-Port Arthur MSA				Texas (Actual)				United States (Actual)			
	C.L.F.	Emp.	Unemp.	% Rate	C.L.F.	Emp.	Unemp.	% Rate	C.L.F.	Emp.	Unemp.	% Rate
Apr-2010	187.8	167.9	19.9	10.6	12,210.8	11,221.2	989.6	8.1	153,911.0	139,302.0	14,609.0	9.5
Mar-2010	186.7	166.6	20.1	10.8	12,122.3	11,127.6	994.7	8.2	153,660.0	137,983.0	15,678.0	10.2
Apr-2009	183.2	167.6	15.6	8.5	11,832.5	11,031.5	801.0	6.8	153,834.0	140,586.0	13,248.0	8.6